

# ±14.19 ACRES FOR SALE

1926 BAKER ROAD, HIGH POINT, NC 27263

Linville | Team Partners

COMMERCIAL REAL ESTATE



DEVELOPMENT OPPORTUNITY!

## PROPERTY HIGHLIGHTS

PROPERTY TYPE	Land
ACRES ±	14.19
SALE PRICE	\$600,000

## DESCRIPTION

Prime development opportunity! ±14.19 acres zoned LI, with multiple conceptual layouts available. Extremely convenient to US 29, I-74, and I-85. This site has been preliminarily laid out for up to ±80,000 SF, but could accommodate a multitude of other uses, including industrial outdoor storage, multiple flex/warehouse buildings, and more.

## KEY FACTS

93,690

Population

38.5

Median Age



Average Household Size

\$76,708

Average Household Income

## BUSINESS



4,177

Total Businesses



51,985

Total Employees

NICK GONZALEZ

E Nick@LTPcommercial.com

P 336.724.1715

DOM MAGGIO

E Dom@LTPcommercial.com

M 336.473.0206

P 336.724.1715

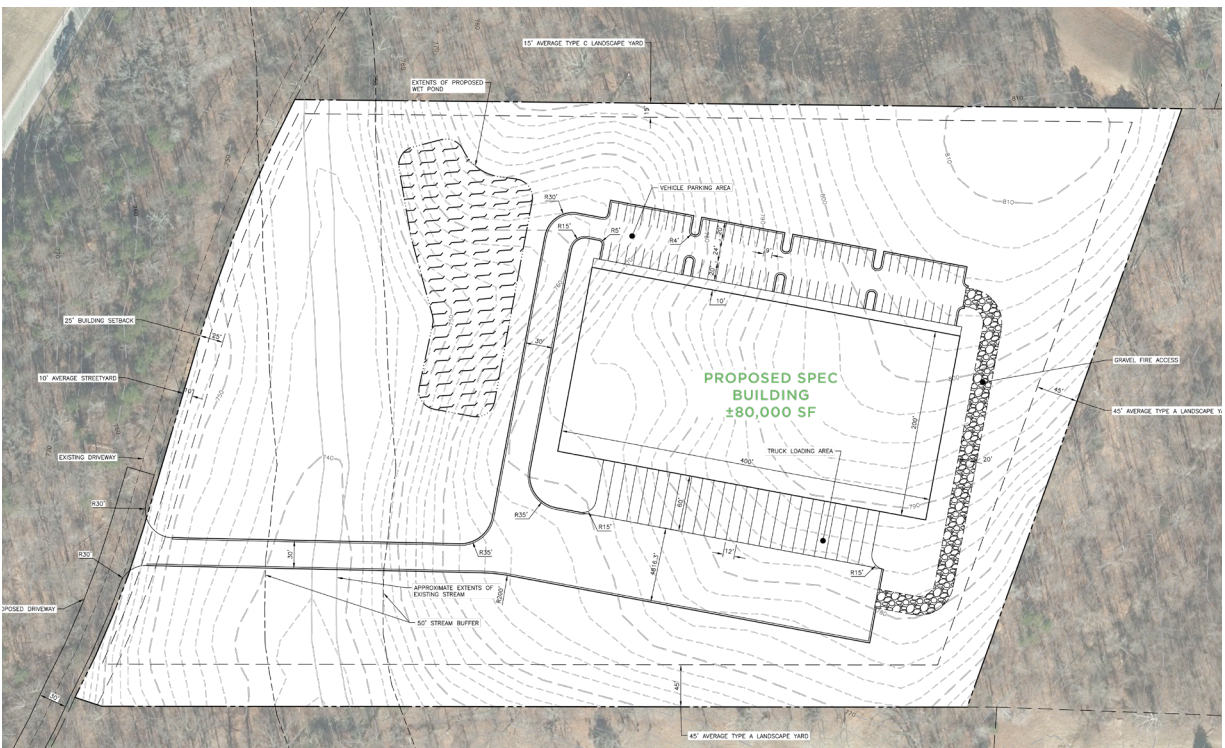
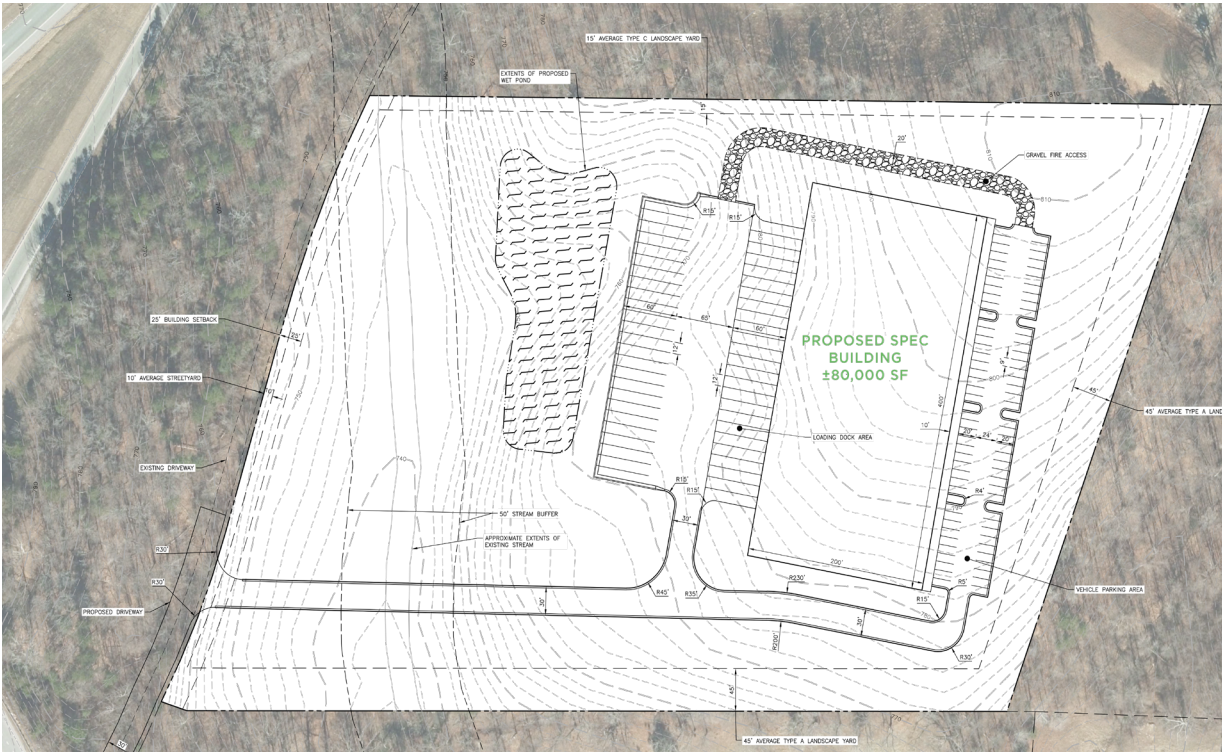
# ±14.19 ACRES FOR SALE

1926 BAKER ROAD, HIGH POINT, NC 27263

Linville | Team Partners

COMMERCIAL REAL ESTATE

## POTENTIAL SITE PLANS

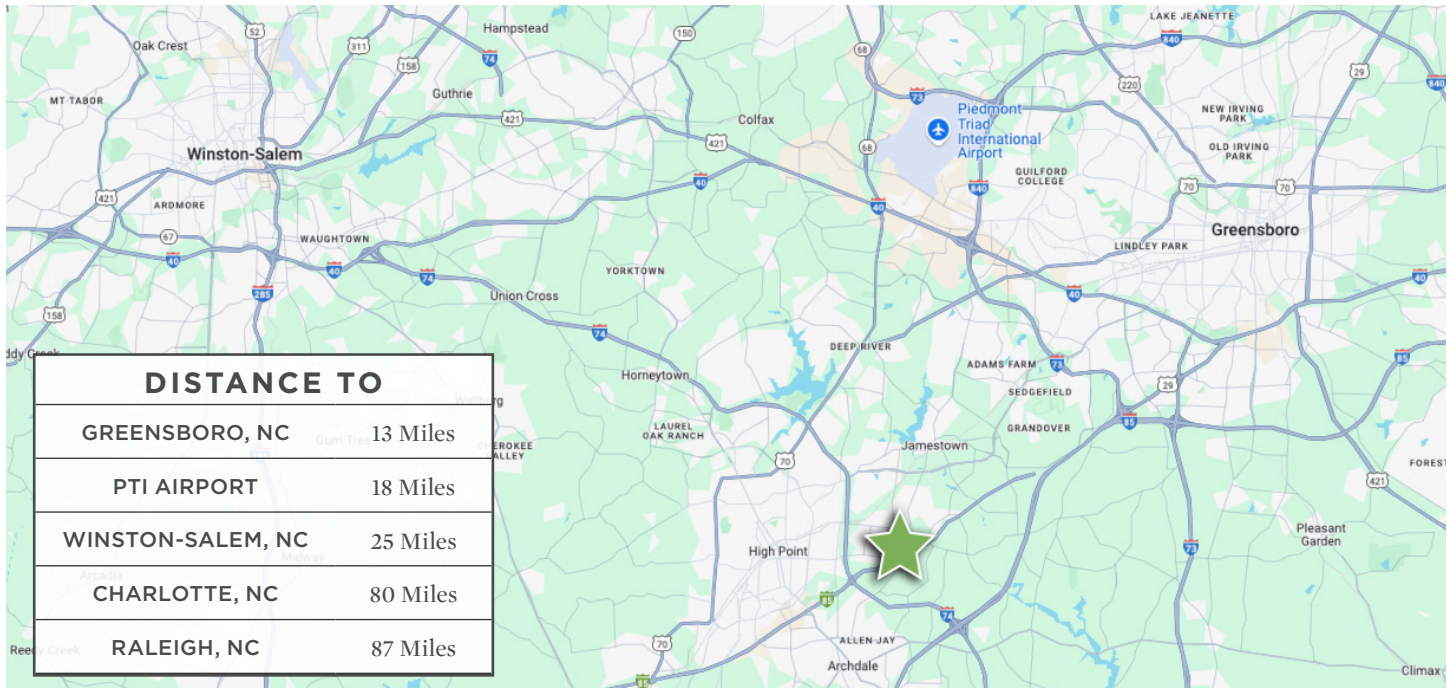


# ±14.19 ACRES FOR SALE

1926 BAKER ROAD, HIGH POINT, NC 27263

Linville | Team Partners

COMMERCIAL REAL ESTATE



## PROPERTY INFORMATION

PROPERTY TYPE	Land	ZONING	LI
ACRES ±	14.19	TAX PIN	7810-82-4445

## PRICING & TERMS

SALE PRICE	\$600,000
------------	-----------

## DESCRIPTION

Prime development opportunity! ±14.19 acres zoned LI, with multiple conceptual layouts available. Extremely convenient to US 29, I-74, and I-85. This site has been preliminarily laid out for up to ±80,000 SF, but could accommodate a multitude of other uses, including industrial outdoor storage, multiple flex/warehouse buildings, and more.

*The information contained herein has been taken from sources deemed to be reliable. Linville Team Partners makes no representation or warranties, expressed or implied, as to the accuracy of this information. All information in this document is subject to verification prior to purchase or lease.*